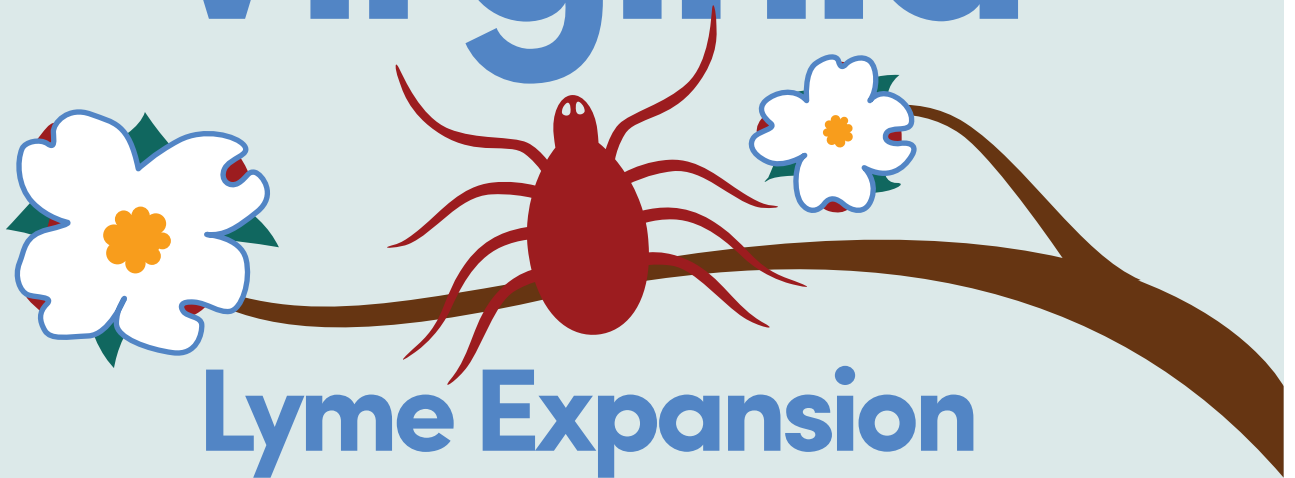


Virginia



Lyme Expansion

“Lyme occurs in a dynamic environment. Tick populations in the western part of the state are undergoing numerical expansion — so there are more ticks — and they are also spatially expanding. We’re seeing the biggest increase in human cases of Lyme between Charlottesville and Blacksburg.”
— Jory Brinkerhoff, University of Richmond

lymestats.org